

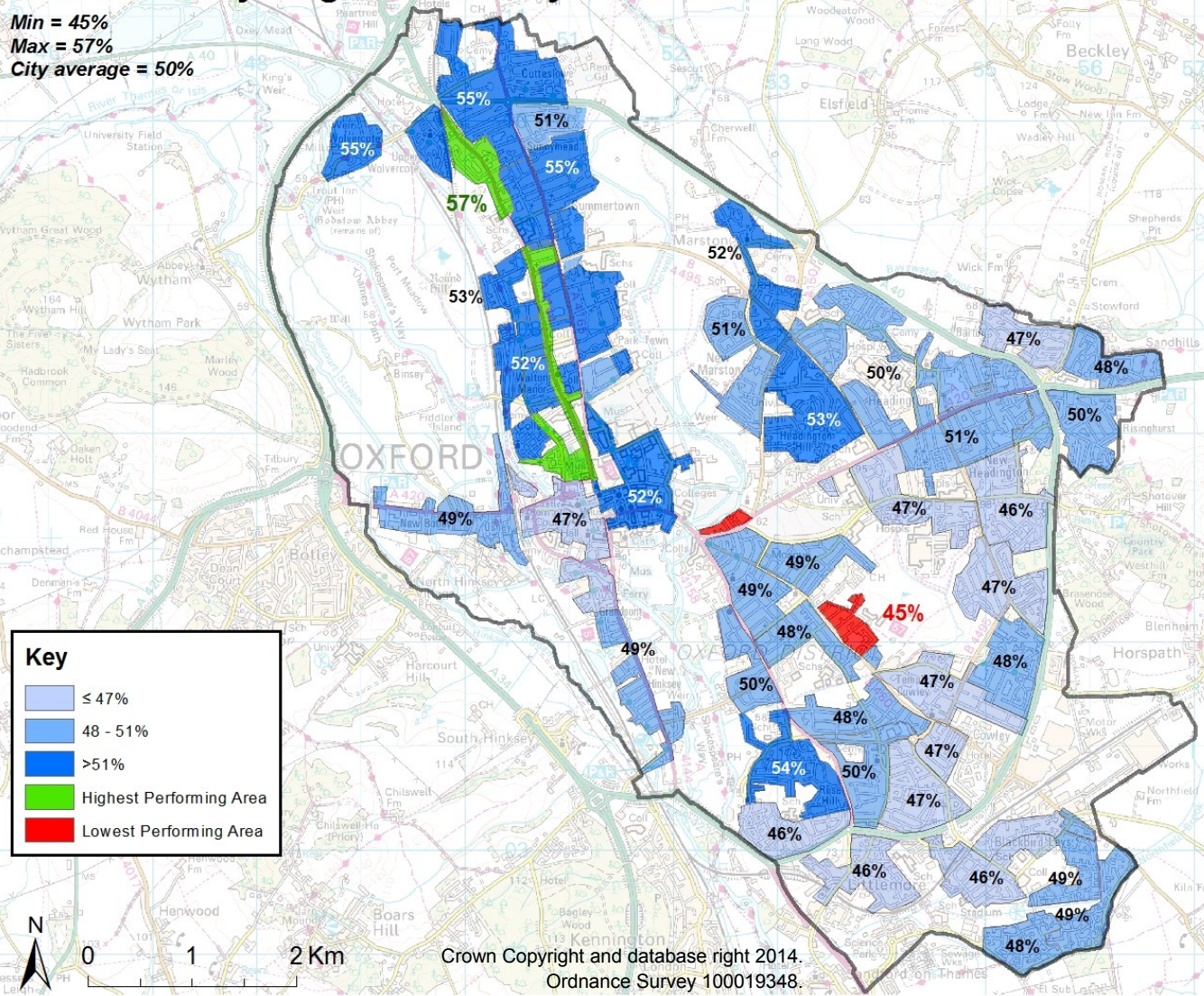
Recycling rate approaches 50%, rates vary across the city

Recycling rates for Oxford have been steadily increasing over the past ten years, with the 2015/16 provisional recycling rate nearly reaching the Council's goal of 50% by 2020 – ten years ago the rate was just under 20%. For year 2014/15, Oxford was one of the top five English cities for recycling. The significant increase in recycling means over 1,000 fewer tonnes of rubbish collected by the Council, and a reduction of carbon emissions equivalent to taking 600 cars off the road. Yet the recycling rate is uneven across the city, with most waste collection rounds north of the city centre recycling over 50% of waste, and many areas south and east of the city centre recycling at rates lower than 47%. To reduce the total amount of waste produced and increase the proportion of the waste stream that is recycled, the Council has been providing incentives and raising awareness through the [Blue Bin Recycling League](#) and completing the roll out of weekly food waste collections to all flat sites in the city.



Kerbside Recycling Rate whole year 2015/16

Min = 45%
Max = 57%
City average = 50%



Annual Recycling Rate

	Recycling	Waste
2015/16*	49.7%	50.4%
2014/15	46%	54%
2013/14	45%	55%
2012/13	45%	55%
2011/12	44%	56%
2010/11	43%	57%
2009/10	38%	62%
2008/09	38%	62%
2007/08	36%	64%
2006/07	25%	75%
2005/06	19%	81%

* The 2015/16 full year data is provisional until published by [Defra](#) this November