

Headington & North Oxford have highest average levels of domestic energy consumption

Around 900,000 tonnes of carbon dioxide emissions are attributable to energy consumption and road transport in Oxford each year, equating to 6 tonnes per resident. Around 30% of this is caused by emissions from domestic energy use – gas or electricity consumed in the home. The maps below show average domestic gas and electricity consumption in 2012 (per domestic energy meter) for different areas of the city. They show that average domestic energy consumption in some areas is over double that of others. Most of the high consumption areas (shaded in darker colours) are in North Oxford and Headington.

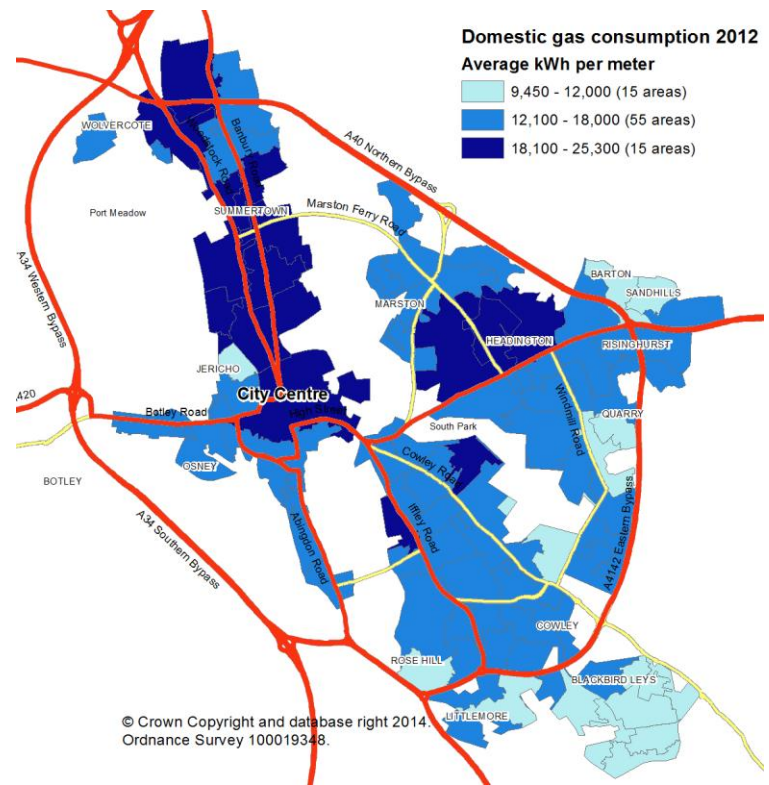
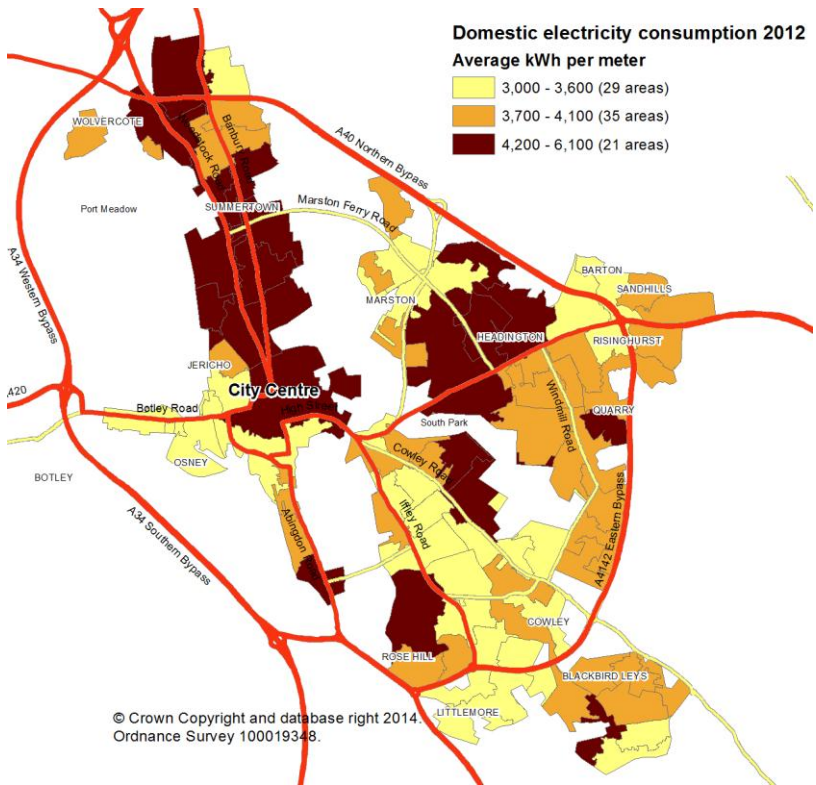
www.oxford.gov.uk



Average annual domestic electricity consumption 2012



Average annual domestic gas consumption 2012



Mark Fransham
Social Research Officer
01865 252797

mfransham@oxford.gov.uk
www.oxford.gov.uk/oxfordstats
Published June 2014

Data source:
LLSOA domestic gas and electricity consumption estimates 2012,
Department of Energy & Climate Change (<http://bit.ly/118qlqP>)